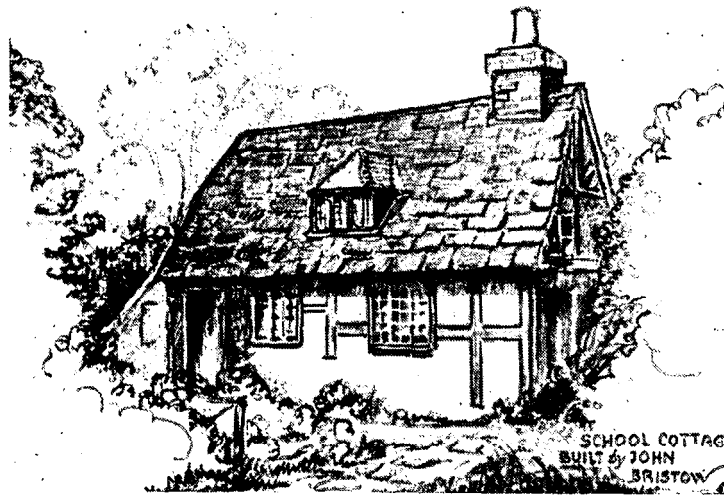


1075971

18 APR 2007

JOHN BRISTOW AND THOMAS MASON TRUST

Registered Charity No. 1075971



School Cottage, built by John Bristow, Rector 16 15-1637
now known as Bristow's Cottage

REPORT AND ACCOUNTS

1 January to 31 December 2006

JOHN BRISTOW AND THOMAS MASON TRUST

Registered Charity No. 1075971

REPORT AND ACCOUNTS 2006

CONTENTS	Page
Trustees, Bankers etc	2
Chairman's Report	3 - 4
The Trust Scheme: Objects and Appointment of Trustees	5
Statement of Trustees' Responsibilities	6
Area of benefit - Map	7
Report of Auditor	8- 9
Accounts: Statement of Financial Activities	10
Balance Sheet	11
Notes on Accounts	12 - 16
List of Grants	17
Policy Statements by the Trustees	18 - 19
History of the Trust	20 - 22

JOHN BRISTOW AND THOMAS MASON TRUST

A Registered Charity

Registered Address	54 Churchfield Road Reigate Surrey RH2 9RH
Trustees	Mr Tim Spinney (Chairman) - appointed 15 July 2004 The Rev. Bill Campen - ex officio Mr Martin Cooper - re-appointed 14 January 2004 Mr Colin Gates - re-appointed 4 July 2005 Mr Feargal Hogan - appointed 12 October 2006 Mr Martin James - appointed 20 March 2006 Mr Gavin Purser - re-appointed 30 January 2006 Mrs Hilary Sewill - retired 16 January 2006 Mrs Jean Smith - re-appointed 18 March 2004 Mrs Pat Willson - re-appointed 14 January 2004
Trust Secretary	Mrs Philippa Assender 54 Churchfield Road Reigate Surrey, RH2 9RH
Bankers	Barclays 105 Victoria Road Horley Surrey, RH6 7AX
Investment Advisors	Cazenove Capital Management Limited 12 Moorgate London, EC2R 6DA
Solicitors	Thomas Eggar Belmont House, Station Way Crawley West Sussex, RH10 1JA
Auditors	CLB Gatwick LLP Imperial Buildings Victoria Road Horley Surrey, RH6 7PZ

JOHN BRISTOW AND THOMAS MASON TRUST

A Registered Charity

Chairman's Report for the year to 31 December 2006

Welcome to the eighth Annual Report of the Trust. The work of the Trust during the calendar year of 2006 is set out in this report to the Charity Commission and the community.

Do please take time to read this report. I will not comment on everything in the Accounts but would draw your attention to some items.

Trustees

In 2006 a number of changes were seen with the Trustees. In January Gavin Purser was re-appointed as a co-opted Trustee for a further four year period, with effect from 30 January 2006. Martin James was appointed as a Nominated Trustee by Charlwood Parish Council for a four year period with effect from 20 March 2006 to take the place vacated by Hilary Sewill's retirement.

You will have read in last year's report of the withdrawal of Crawley Parochial Church Council as a nominating body, following the closure of St Michael and All Angels Lowfield Heath to regular worship. After much discussion with the Charity Commission and within the Body of Trustees it was decided to ask the Governing Body of Charlwood Village Infant School to become a nominating body. We are very pleased they accepted this responsibility and Feargal Hogan was duly appointed by the Governing Body to become a Nominated Trustee for a four year period with effect from 12 October 2006.

Finally it is my first full year as Chairman.

I would like, at this juncture, to thank all the Trustees who put in much time and expertise to the running of the Trust. I would also like to thank our Trust Secretary for keeping everything running smoothly for the good of all.

Grants

In 2005 the Trust agreed a grant of up to £16,000 to Charlwood Parish Council toward drainage of the Millennium Field prior to installation of the play equipment; the actual grant needed to pay for the work was £14,450. The Trust then made an up-front grant for the equipment itself of £5 15 19. Because of the timing of the contracts, to obtain best advantage, the Parish Council were able to reduce the amount spent so the Trust Accounts show a refund of the unused funds of £13,109.65 in 2006, as described in the 2005 report. In 2006 the Trustees also made a grant of £750 to the Parish Council for tree management on the Millennium Field.

You will see from the list of grants that funds have been provided to many of the local organisations.

In 2005 the Trust gave a commitment to make a grant of £100,000 to St. Nicholas PCC towards the project to build an extension to Charlwood Church provided the project goes ahead before early 2010. In the notes to the accounts the commitment to St. Nicholas Church extension is specified and continues. The Trust is regularly updated on progress by the PCC.

You will see from the list of grants made (see page 17) that the sum given in grants is lower than in previous years. This is mainly because the total grant paid to the Parish Council towards the Charlwood play equipment project and drainage of the Millennium Field was lower than the maximum sum agreed and included in the 2005 Accounts. In addition the number of applications for grants was lower than in previous years which is of concern to the Trustees. We have been considering how best to promote/present/represent ourselves. The Trust is for the benefit of all residents and organisations in the area of benefit and grants can be made within the Object of the Trust (as set out on page 5)

Over the coming months you will, I hope, see more and different avenues pursued so as to make ourselves known and available to those who might benefit. You might like to spare a moment to look through our Objects and become familiar with what we can do. We are particularly concerned about 'Object 2' which is the relief of inhabitants of the area of benefit who are in need, hardship or distress; or sick, convalescent, disabled, handicapped or infirm. We feel that there is more we can do here. Can we please enlist your support? If you know of someone who might benefit but who is reluctant or needs a hand, do please talk to us or simply help the person concerned. The first port of call should be Philippa Assender, our Trust Secretary (01737 226008), or if you know a Trustee do please talk to them. All applications are very sensitively handled and dealt with confidentially as appropriate.

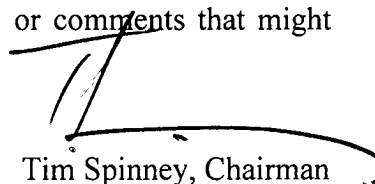
Bristow's Cottage

The work to correct the subsidence problem at Bristow's Cottage continued in 2006; however the Trustees were not satisfied with the quality of the job and work to rectify the situation continues. This is an insurance claim.

Finance

The funds of the Trust continue to be invested in Common Investment Funds approved by the Charity Commission. The capital value of the investments increased to £1,959,268 from £1,789,316 (see page 16). During 2006, on the advice of their Investment Advisers at Cazenove Capital Management, the Trustees adopted a more defensive stance by selling some of the equity holdings and investing in a Common Investment Hedge Fund approved by the Charity Commission so as to diversify the spread of the portfolio.

Thank you for reading this. If you have any thoughts or comments that might help us do please let us know.



Tim Spinney, Chairman

Date:

JOHN BRISTOW AND THOMAS MASON TRUST

Registered Charity No. 1075971

The Trust Scheme

The Trust Scheme was set up by Order of the Charity Commissioners for England and Wales effective 1 March 1999, and amended by a resolution passed at a special meeting of the Trustees on 23 June 2006

Objects

The objects of the Trust as laid down by the Charity Commission are:-

- 1 The promotion of education in the area of benefit* through the provision and support of such facilities and services as the trustees think fit.
- 2 The relief of inhabitants** who are
 - (a) in need, hardship or distress; or
 - (b) sick, convalescent, disabled, handicapped or infirm.
- 3 The provision and support, with the object of improving the conditions of life of the inhabitants in the interests of social welfare, of facilities for recreation and other leisure-time occupation of the inhabitants or any sufficient section of them;
- 4 The provision and support of such other charitable purposes for the benefit of the inhabitants or any sufficient section of them as the trustees think fit.

* the area of benefit is outlined on the map on page 7 of this Report and is the 1926 boundary of the Parish of Charlwood

** "the inhabitants" means the inhabitants of the area of benefit

Trustees

The Scheme for the John Bristow and Thomas Mason Trust, as amended by a resolution passed at a special meeting of the Trustees, states that there should be:

- | | |
|--------------------------|---|
| one ex officio trustee: | the rector for the time being of the ecclesiastical parish of St. Nicholas, Charlwood |
| four nominated trustees: | three appointed by Charlwood Parish Council
one appointed by the Governing Body of Charlwood Village Infant School |
| four co-opted trustees: | who, as far as possible, are persons who through residence, occupation, employment or otherwise have special knowledge of the area of benefit |

JOHN BRISTOW AND THOMAS MASON TRUST

A Registered Charity

Statement of Trustees' Responsibilities

The Charity's Trustees are responsible for preparing the Annual Report and Financial Statements in accordance with applicable law and United Kingdom Generally Accepted Practice.

The Law requires the Trustees to prepare Financial Statements for each financial year, which give a true and fair view of the state of affairs of the Charity and its financial activities for that period. In preparing those Financial Statements, the Trustees are required to:

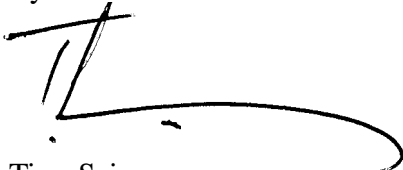
- a) select suitable accounting policies and apply them consistently;
- b) make judgments and estimates that are reasonable and prudent;
- c) state whether applicable accounting standards and statements of recommended practice have been followed.
- d) prepare the financial statements on the going concern basis, unless it is inappropriate to presume that the Charity will continue in operation

The Trustees are responsible for keeping proper accounting records that disclose with reasonable accuracy at any time the financial position of the Charity and enable them to ascertain the financial position of the Charity and which enable them to ensure that the Financial Statements comply with the Charities Act 1993. They are also responsible for safeguarding the assets of the Charity and hence for taking reasonable steps for the prevention and detection of fraud and other irregularities.

Legislation in the United Kingdom governing the preparation and dissemination of Financial Statements may differ from legislation in other jurisdictions.

The Trustees confirm that so far as they are aware, there is no relevant audit information of which the Charity's Auditors are unaware. They have taken all the steps that they ought to have taken as Trustees in order to make themselves aware of any relevant audit information and to establish that the Charity's Auditors are aware of that information.

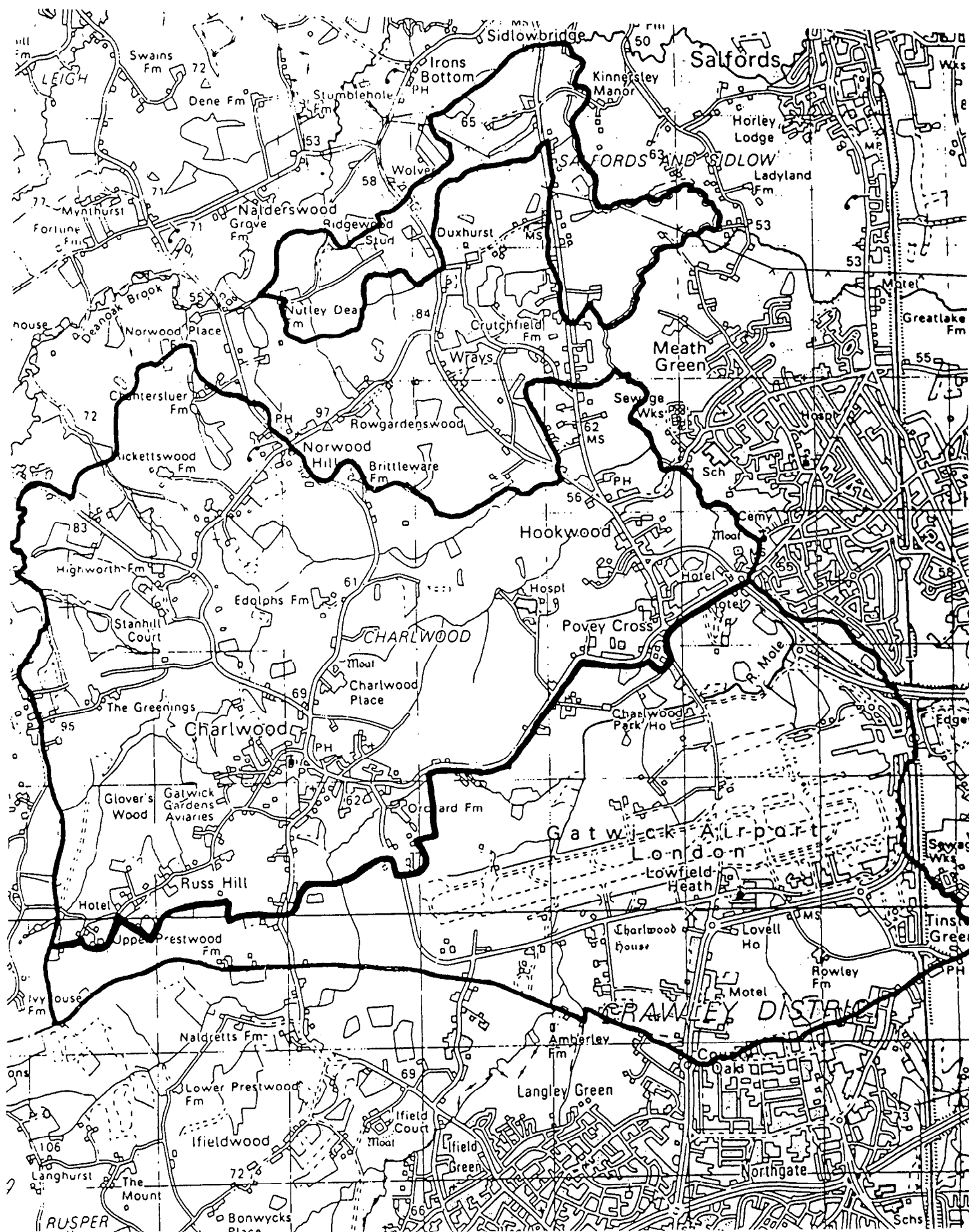
By order of the Trustees



Tim Spinney
Chairman

Date:

AREA OF BENEFIT



JOHN BRISTOW AND THOMAS MASON TRUST

A Registered Charity

Auditors' Report

Independent Auditors' Report to the Trustees of the John Bristow and Thomas Mason Trust

We have audited the financial statements of the John Bristow and Thomas Mason Trust for the year ended 31st December 2006 on pages 10 to 16. These financial statements have been prepared under the accounting policies set out therein.

This report is made solely to the Charity's Trustees, as a body, in accordance with Section 43 of the Charities Act 1993 and with regulations made under Section 44 of that Act. Our audit work has been undertaken so that we might state to the Charity's Trustees those matters we are required to state to them in an auditor's report and for no other purpose. To the fullest extent permitted by law, we do not accept or assume responsibility to anyone other than the Charity and the Charity's Trustees as a body, for our audit work, for this report, or for the opinions we have formed.

Respective responsibilities of trustees and auditors

As described in the Statement of Trustees' Responsibilities the Charity's Trustees are responsible for the preparation of the financial statements in accordance with applicable law, United Kingdom Accounting Standards and the Charities Statement of Recommended Practice (United Kingdom Generally Accepted Accounting Practice).

We have been appointed as auditors under section 43 of the Charities Act 1993 and report in accordance with regulations made under section 44 of that Act. Our responsibility is to audit the financial statements in accordance with relevant legal and regulatory requirements and International Standards on Auditing (UK and Ireland).

We report to you our opinion as to whether the financial statements give a true and fair view and are properly prepared in accordance with the Charities Act 1993. We also report to you if, in our opinion, the Trustees Annual Report is not consistent with the financial statements, if the Charity has not kept proper accounting records, or if we have not received all the information and explanations we require for our audit.

We read other information contained in the Trustees' Annual Report and consider whether it is consistent with the audited financial statements. We consider the implications for our report if we become aware of any apparent misstatement or material inconsistencies with the financial statements. Our responsibilities do not extend to any other information.

Basis of audit opinion

We conducted our audit in accordance with International Standards on Auditing (UK and Ireland), issued by the Auditing Practices Board. An audit includes examination, on a test basis, of evidence relevant to the amounts and disclosures in the financial statements. It also includes an assessment of the significant estimates and judgments made by the Trustees in the preparation of the financial statements and of whether the accounting policies are appropriate to the charity's circumstances, consistently applied and adequately disclosed.

We planned and performed our audit so as to obtain all the information and explanations which we considered necessary in order to provide us with sufficient evidence to give reasonable assurance that the financial statements are free from material misstatement, whether caused by fraud or other irregularity or error. In forming our opinion we also evaluated the overall adequacy of the presentation of information in the financial statements.

Opinion

In our opinion the financial statements:

- give a true and fair view, in accordance with United Kingdom Generally Accepted Accounting Practice, of the state of the Charity's affairs as at 31 December 2006 and of its incoming resources and application of resources in the year then ended; and
- have been properly prepared in accordance with the Charities Act 1993

Imperial Buildings
Victoria Road
Horley
Surrey RH6 7PZ

Date



CLB Gatwick LLP
Chartered Accountants and
Registered Auditor

JOHN BRISTOW AND THOMAS MASON TRUST

A Registered Charity

Statement of Financial Activities for the year ended 31 December 2006

		Unrestricted Funds £	Endowment Funds £	Total 2006 \$	Total 2005 £
Incoming Resources	Note				
Rental Income		9,240		9,240	11,360
Investment Income		73,846		73,846	74,801
Total Incoming Resources		83,086		83,086	86,161
Resources Expended					
On Properties	3	5,597		5,597	20,444
Grants and Donations payable	4	3,056		3,056	122,848
Governance Costs	5	11,729		11,729	9,869
Total Resources Expended		20,382		20,382	153,161
Net Incoming/(Outgoing) Resources before Transfers		62,704		62,704	(67,000)
Net Incoming/(Outgoing) Resources after Transfers		62,704		62,704	(67,000)
Gains on the revaluation of Tangible Assets					80,000
Gains and losses on the revaluation and disposal of Investment Assets			159,552	159,552	189,817
Net Movement in Funds		62,704	159,552	222,256	202,817
Total Funds Brought Forward		67,299	2,278,718	2,346,017	2,143,200
Total Funds carried Forward		130,003	2,438,270	2,568,273	2,346,017

JOHN BRISTOW AND THOMAS MASON TRUST

A Registered Charity

Balance sheet at 31 December 2006

		Unrestricted Funds £	Endowment Funds £	Total 2006 £	Total 2005 £
Fixed Assets	Note				
Tangible Assets	1/6		375,002	375,002	375,002
Investments	7		1,959,268	1,959,268	1,789,3 16
Total Fixed Assets			2,334,270	2,334,270	2,164,318 =====
Current Assets					
Debtors	8/9	12,891	104,000	116,891	122,626
Cash at bank and in hand	10	121,216		121,216	95.019
Total Current Assets		134,107	104,000	238,107	217,645 -----
Creditors; amounts falling due within one year		4,104		4,104	35,946
Net Current Assets		130,003	104,000	234,003	181,699 -----
Total Assets less Current Liabilities		130,003	2,43 8,270	2,568,273	2,346,017 -----
Capital Funds					
Permanent Endowment Funds			2,43 8,270	2,438,270	2,278,7 18
Total Capital Funds			2,438,270	2,438,270	2,278,7 18 =====
Income Funds					
Unrestricted Funds		130,003		130,003	67.299 -----m-m--
Total Funds		130,003	2,43 8,270	2,568,273	2,346,0 17 =====

JOHN BRISTOW AND THOMAS MASON TRUST

A Registered Charity

Notes to the Accounts 31 December 2006

1. Accounting Policies

The financial statements have been prepared under the historical cost convention, as modified for the valuation of certain tangible fixed assets, and in accordance with the Statement of Recommended Practice "Accounting and Reporting by Charities" (SORP 2005) and applicable UK Accounting Standards and the Charities Act 1993.

Income includes dividends, interest receivable and rent receivable up to 31 December 2006.

Provision is made for grants and loans which have been formally approved by the Trustees and notified to applicants before 31 December 2006. Investments are stated at middle price. Both the recreation land at The Withey, Hookwood and the Millennium Field, Charlwood are carried at £1 each because these are non income producing assets. Bristow's Cottage and Charity Field are shown at the market values as at 31 December 2005.

2. Taxation

As a registered charity, the Trust is not subject to United Kingdom corporation tax or income tax. Any tax deducted from interest is recoverable. The Trust is not registered for Value Added Tax. VAT suffered on expenditure therefore is irrecoverable and written off except in cases where Charlwood Parish Council is involved.

3. Expenditure on Property

The following expenditure was incurred on Bristow's Cottage during 2006:

	£
Gas Safety Certificate	69
Garden maintenance	1,000
General maintenance	358
Rental management fees	2,241
	3,668

The following expenditure was incurred on Charity Field during 2006:

White & Sons fees	2246
-------------------	-------------

The following expenditure was incurred on Millennium Field and that part that includes the drive leading to Tifters, Charlwood during 2006:

Legal fees	£925
------------	-------------

Insurance on all Properties	£758
-----------------------------	-------------

Total spent on Properties	£ 5,597 -----
---------------------------	-------------------------

4. Grants and Donations payable

Grants to third parties	(2,144
Renovations to Bristow's Cottage (see Note 8.)	5,200
	£ 3,056

5. Governance costs

Governance costs of £1 1,729 were as follows:

Trust Secretary's gross salary	7,616	
Employers National Insurance Contribution	333	
Pension contributions	548	
		8,497
Auditors' remuneration		1,610
Other office costs including telephone, stationery, printing, photocopying		1,622
	£ 11,729	=====

6. **Bristow’s Cottage and Charity Field**

White & Sons, Estate Agents and Surveyors of Dorking, Surrey, carried out the following property valuations for Bristow’s Cottage and for Charity Field as at 31 December 2005. The basis of the valuations was the market value for owner occupation as defined in the R.I.C.S. Appraisal and Valuation Standards (The Red Book). White & Sons are not an Independent Valuer strictly as defined in the Appraisal and Valuation Standards as they receive remuneration in respect of the management of both of the above properties. Nevertheless the Trustees accept White & Sons valuation advice as an Independent Valuer notwithstanding their continuing professional involvement with the Trustees in respect of both properties valued.

The valuations advised were in respect of:	£
Bristow’s Cottage, Rectory Lane, Charlwood	325,000
Charity Field, Beggarhouse Lane, Charlwood	50,000
	375,000
The Withey, Hookwood, and the Millennium Field, Charlwood	2
	£ 375,002
	=====

The Trustees do not consider the valuations to be materially different at 3 1 December 2006

7. **Investments**

Investments in Common Investment Funds stated at middle prices totalling £1 ,959,268 have an original cost of £1,672,447 as shown on page 16.

8. **Renovations to Bristow’s Cottage**

The Charity Commission gave permission for the Trustees to spend £130,000 from permanent endowment for the purposes of renovating Bristow’s Cottage, subject to replacement from income, repayable over 25 years. The fifth repayment of £5,200 was made in 2006 leaving a balance of £104,000.

9. Debtors

The Trustees have made interest free loans which were outstanding as at 31 December 2006:

- * £7,826 to Charlwood Parish Council, for a term of one year, that was reviewed in 2005 and extended until January 2007, to enable them to go ahead with the project to replace the play equipment at The Withey, Hookwood.
- * £4,484 to St. Michael & All Angels Church, Lowfield Heath for emergency repairs, made in January 2004. The loan to be repayable only if a capital sum, or sums, is made within 25 years of the making of the loan on a sale or lease of St. Michael & All Angels Church and in so far as any part of the loan, or the whole loan, is still outstanding at the end of that period any such sums received will be applied as first priority.

The balance of debtors amounting to £580 is made up of small items

10. Cash at bank and in hand - Commitments

The Trustees have committed the Trust to support St Nicholas PCC with their project to build an extension to Charlwood Church. The commitment is to make a grant, in the future, of £100,000, provided the PCC raises the rest of the money needed and the project goes ahead before early 2010. Sufficient accumulated income has been kept to enable the Trust to meet the commitment having in mind the timing of any grant. The PCC is to keep the Trustees informed of progress. The Trustees have indicated to St Nicholas PCC that the grant will not be paid in full before January 2010, subject to the Trust's best endeavours to assist prior to that date if the project is ready to proceed. The Trustees do not wish to tie up more money than is necessary for a project which may be delayed.

11. Cash Flow

The Endowment fund experiences changes in its portfolio of investments but no inward or outward cash flow, except for the repayment of capital (see note 7. above) and in exceptional circumstances. The Income Fund cash flow differs from the income and expenditure only in respect of movements on loans, grants payable and creditors.

JOHN BRISTOW AND THOMAS MASON TRUST

A Registered Charity

Endowment Fund - Investments at 31 December 2006

31 December 2005				31 December 2006			
Units	Cost	Market Value		Units	Cost	Market Value	
	£	£			£	£	
FIXED INTEREST							
468,000	305,116	298,139	Cazenove Income Trust for Charities	468,000	305,116	281,525	
98,715	171,510	191,162	Charinco Income Trust	98,715	171,510	180,648	
EQUITIES							
522,032	307,004	369,808	Cazenove Equity Income Trust for Charities	450,000	264,642	365,040	
350,000	466,900	399,998	Cazenove Growth Trust for Charities	240,000	320,160	321,216	
81,070	129,623	196,919	Schroder Charity Equity Income Fund	81,070	129,623	217,632	
24,052	279,788	333,290	M & G Charifund Income Fund	24,052	279,788	387,536	
HEDGE FUNDS							
-	-	-	Cazenove Absolute Return Trust for Charities Distribution	1,605.8	201,608	205,671	
	1,659,941	1,789,316			1,672,447	1,959,268	

JOHN BRISTOW AND THOMAS MASON TRUST

List of Grants for the year to 31 December 2006

The grants listed below were approved by the Trustees up to 31 December 2006 and had been paid or were in the course of payment at that date

	Year to 31 December 2006 &	Total Grants 1 March 1999 to 31 December 2006 £
Education Grants -		
Charlwood Village Infant School		22,359
Charlwood Village Infant School PTA	3,024,	18,270
Hookwood Playgroup	326	3,191
St. Nicholas Church Venture Weeks	2,750	19,500
Woody's After School Club		2,315
General Education Grants		3,213
	6,100	68,848
Charlwood Guides, Brownies and Rainbows	714	3,166
Charlwood & Hookwood Comm. Fund (refund of earlier grant)-		(1,386)
Charlwood Mothers' Union	150	1,121
Charlwood Parent, Baby & Toddler Group	500	500
Charlwood Players		1,500
Charlwood Parish Council:		
Play equipment and tarmac path, Hookwood		18,805
Charlwood Recreation Ground drainage		9,167
Play equipment, Charlwood	(13,110)	3,849
Millennium Field, Charlwood	(1,590)	75,494
Other projects		8,966
Charlwood Scout Group (8th Horley)		2,190
Charlwood W. I.	100	700
Domestic Buildings Research Group (Surrey)		3,000
Hookwood Memorial Hall Trust; New hall		93,937
Associated legal fees and stamp duty		6,883
Bollards - access road		1,575
Horley Citizens Advice Bureau	500	500
Horley Playscheme/YMCA Y ippee project	200	1,930
Lowfield Heath Windmill Trust		7,044
Providence Chapel		3,410
Riding for the Disabled, Horsehills Group	50	350
Royal British Legion Women's Section Charlwood	150	1,050
St. Catherine's Hospice	3,250	23,900
St. Michael and All Angels, Lowfield Heath		17,567
St. Nicholas PCC	(283)	33,936
Sidlow Bridge Organ Restoration Fund		1,500
Vitalise	250	250
Assistance Grants: Personal	875	8,631
Independent Age		350
* Small Grants in previous years		5,297
	(2,144)	438,590

* From 1 March 1999 to 31 December 2005 Grants totalling £1,000 or under have been made to Charlwood Big Band (£500), Charlwood Day Centre (£1,000), Charlwood and Hookwood Millennium Committee (£951), Charlwood Playgroup (£500), Charlwood Golden Jubilee Committee (£533), Charlwood Village Football Club (£911), East Surrey Advocacy project (£750), and for The Withey (£152).

JOHN BRISTOW AND THOMAS MASON TRUST

A Registered Charity

Statements of Policies

Policy on selection of individuals and institutions who are to receive grants

- i) the area of benefit will be taken as a whole and applications from any part of the area of benefit or communities within them will be considered on merit;
- ii) steps will be taken to achieve growth both in capital and in income but in particular to preserve Bristow's Cottage and other capital of the Trust for future generations;
- iii) in supporting projects and societies, the Trustees are determined that voluntary fund-raising efforts must not be impaired and it wishes community involvement to remain as strong as it has been in past years;
- iv) the Trustees are willing to work in co-operation with other charities within the area of benefit such as Smiths and Earle's.

Reserves Policy

In line with the guidance issued by the Charity Commission, the Trustees have reviewed the need for reserves. The Trustees seek to apply all income on charitable purposes as soon as is reasonably prudent, however they have concluded:

1. that it is right to keep about £20,000 to £30,000 in reserve as this approximates to four months outgoings and this is the amount required to ensure that the Trust can be run efficiently and to meet grant applications without delay.
2. that it is right to keep additional reserves when it is anticipated that there is a real prospect that the Trustees will, within the following two years or thereabouts, make a grant which is greater than 20% of the budgeted annual income. The amount of this reserve will depend on the size of the anticipated grant or the accumulated total if there is more than one.

The Trustees monitor the level of reserves at least three times a year.

Risk Management and Control Policy

The Trustees have identified the potential risks to which the Trust is exposed and have set up a Risk Register that is reviewed at least once a year. The Trustees are satisfied that they have established systems and procedures to mitigate those risks

Investment Policy

It is the Trustees' policy to invest in equities, or other equity type investments, and in fixed interest stock and to place money with deposit takers.

The objective is to achieve growth, both in capital and income, but in particular to preserve the capital for future generations. Within that broad objective the aim is to obtain income of £60,000 upwards per annum from these investments.

The Trustees have appointed Cazenove as investment advisors. They seek low risk investments and place no restrictions. Some funds are placed on deposit with Cazenove otherwise investments are in Common Investment Funds and Common Deposit Funds approved by the Charity Commission. The performance benchmarks are the FTSE All Share index for equity funds and the FTSE Government All Stocks index for fixed interest funds. Cazenove have no discretion to change the equity or fixed interest investments without specific instructions from the Trustees. Common Investment Funds from two or three different Investment Houses are chosen for both equity and fixed interest investments.

The ratio between funds in equities, other equity type investments, fixed interest and on deposit will vary, but in general 50% to 70% will be in equities, 0% to 10% in hedge funds and 25% to 40% in fixed interest. A small proportion may be with a deposit taker or in a current bank account.

Cazenove report four times a year on the investment performance and the investment policy is reviewed at least once a year.

The Trust also owns real property and there are special reasons for each holding. The Trustees do not invest in real property for purely investment purposes.

Recruitment of Trustees

On appointment, a new Trustee is sent an Induction Pack comprising:

- Copy of the Trust Scheme dated 1 March 1999
- Copy of the Minutes of the Special Meeting of the Trustees held on 23 June 2006 with the resolution to amend clause 8 (1) of the Trust Scheme.
- Copy of the most recent audited Trust Annual Report and Accounts
- Copy of the Charity Commission publication CC3 The Essential Trustee: What you need to know
- Copy of the shortened Charity Commission publication CC3 (a) Responsibilities of Charity Trustees - A Summary.
- Details of the current Trustees including contact details
- Copy of the Minutes of the last Trustees' meeting

The Chairman then has a meeting with the new Trustee to give further information and details on the Trust and to answer any questions.

HISTORY OF THE JOHN BRISTOW AND THOMAS MASON TRUST

A Registered Charity

The John Bristow and Thomas Mason Trust formally came into existence on 1 March 1999 when the two Charlwood Charities of the John Bristow Charity and the Thomas Alexander Mason Trust combined to form a single new charity to carry on the work of both the charities.

History of John Bristow's Charity

John Bristow was rector of Charlwood from 1615 until his death in 1637. He was a local Charlwood man whose family had lived here for at least two centuries. He was comparatively well off, owning properties in Horley and Charlwood.

During his lifetime John Bristow built a cottage now known as Bristow's Cottage and gave it, and the half acre adjoining, under the care of six trustees, to be "a Schoolhouse, and for the teaching of two poor children therein gratis". In his will he added a field of seven acres, now called Charity Field, beside Beggarshouse Lane and increased to three the number of children to receive free education.

The cottage remained as the village school for over 200 years, until a new and larger boys' school was built in 1840 and a new girls' school (now the Parish Hall) in 1852. In 1863 it was recorded that the aged schoolmaster, John Mann, was still teaching without charge, four poor children to read, write and cast accounts. Subsequently the cottage was let, with the rental income being used to support education.

For many years the cottage was occupied by a well known Charlwood character, Eric Wickens, and his family. When he died in 1995 the Trustees decided that the cottage needed extensive restoration, to preserve it, and to bring the bathroom and kitchen up to date. The charity did not, however, have sufficient funds to finance this expenditure, and therefore suggested an amalgamation with the Thomas Alexander Mason Trust. The Charity Commission decided that the merger made sense since the Bristow's Charity and the Thomas Alexander Mason Trust both covered the same area of benefit, both covered education, both had the Rector of Charlwood as an ex officio Trustee, and it allowed the new charity to spend some of its capital on the restoration. The merger also allowed the cottage to be retained in community ownership, thus preserving a unique part of the heritage of the village.

History of the Thomas Alexander Mason Trust

Thomas Alexander Mason was born in Southwark in 1859. Actually he was born as Thomas Alexander Bear but changed his name to Mason by deed poll when he was 29. He inherited a successful family tobacco business which he sold to British American Tobacco at the end of the first world war. For many years he lived in Reigate, and died at the age of 90. He was a solitary man and a private benefactor, often buying plots of land and giving them to charities.

In 1926 he bought an acre of land in the centre of the village of Lowfield Heath “for the purpose of a recreation ground and open space”. There is no record of why he made this gift. At that time Lowfield Heath was part of the Parish of Charlwood and the Charlwood Parish Council became the Trustee for the land.

In the 1970’s much of the village of Lowfield Heath was demolished due to the noise from Gatwick Airport, leaving just the church and the windmill. The 1973 boundary changes transferred Lowfield Heath to Crawley, but the Charity Commission ruled that the land should remain under the trusteeship of Charlwood Parish Council. During the following eight years the ground became disused and overgrown and eventually planning permission was obtained for development.

In November 1981 the land was sold for £490,000. After guidance and direction from the Charity Commission as to who should have responsibility for safeguarding this large sum for the Parish, a new charitable trust was set up named after the original donor. The Trust, which came into existence in January 1983, was “for the benefit of the inhabitants of the Parish of Charlwood”, with the boundaries as they were in 1926 when Thomas Mason made his gift (as illustrated on page 7).

Major Grants made over the years

Between 1983 and 2006 the John Bristow and Thomas Mason Trust, and its predecessor the Thomas Alexander Mason Trust, have supported the following projects:

St Nicholas’ Church. Grants have been given for this important Norman Grade I listed building to enable comprehensive repairs to the stonework, tower, roof, windows and walls. A new heating system has been installed and the church has been redecorated. Grants have also been made for the purchase of a printing machine and towards the cost of churchyard maintenance. A further £100,000 has been promised towards the proposed extension (not included in totals below).

Total grants £245,040

The Withey has been provided as a recreation area for Hookwood. This piece of land in the centre of Hookwood was acquired in 1987 and landscaped by the Trust. It is leased to the Parish Council which has responsibility for its maintenance. In 2005 the Trust paid for new fencing and gates.

Total grants \$112,367

Hookwood Memorial Hall. Grants were given to the Hookwood Memorial Hall Trust to help towards building the new hall, opened in June 2001, and to cover legal expenses. The land for the hall is leased for 125 years and was provided free.

Total grants £102,395

The Millennium Field. This 2 acre field adjacent to the Charlwood Recreation Ground was purchased at the suggestion of the Charlwood Millennium Committee, leased to the Parish Council and opened to the public in 2000. Much work has been done on landscaping the field and management of the trees. A further grant enabled the field to be drained prior to the installation of new children's play equipment.

Total grants including purchase £101,163

Charlwood Parish Council. Grants were given in the 1980's for the modernisation of the sports pavilion on the Recreation Ground, and for the provision of play equipment and safety surfaces. In 2004 a grant and a loan were given towards the cost of new play equipment in Hookwood; and towards the drainage of the Charlwood Recreation Ground. In 2005 a partly repayable grant was provided towards new play equipment in Charlwood. Grants have also been given for the provision of footways, village notice boards, and towards the cost of the village sign.

Total grants (excluding The Withey and the Millennium Field) £154,746

Charlwood Parish Hall. Help has been given with external repairs, damp proofing, new flooring, redecoration, heating, new stage curtains and rails, provision of a disabled toilet and disabled ramp, and with repairs to the cottage.

Total grants £59,202

Education. Grants for educational purposes have been given to Charlwood school for computers, whiteboards, swimming expenses, a part-time voluntary teacher; 'outside classroom', running water and sinks in classrooms, photocopier and many other items of equipment; to the Hookwood Playgroup for running costs, staff training, and storage shed; to the Charlwood Playgroup for staff training, new premises, rent equipment and storage shed; Venture Week has been supported for many years. A number of personal education assistance grants have been made

Total grants £134,653

Woodland. Grants have been given to the Woodland Trust to enable it to purchase and open for public enjoyment over 120 acres of woodland. Grants made from 1983 to 1992 enabled them to buy a large part of Glovers Wood (a site of special scientific interest) and all of Edolphs Copse. A grant in 1986 enabled the removal of an ugly barn in Edolphs Copse.

Total grants £70,490

Lowfield Heath Windmill. Help was given for the rescue of the dilapidated mill which was in danger of demolition, restoring it and rebuilding it on a new site in Charlwood; and also for subsequent maintenance.

Total grants £56,875

Lowfield Heath church. Funds have been provided for extensive repairs to the church of St Michael and All Angels (listed grade 2*).

Total grants £56,710

Bristow's Cottage and Charity Field. The historic cottage was repaired and renovated in 2000 and 2001 at a cost of £133,527. In 2005 the field was fenced and ditched at a cost of £7,806. (Subsequent repairs and management costs are excluded).

Total cost \$141,333

In total over 24 years grants have been made totalling nearly £1.3million.



Thomas Alexander Mason with his wife Mary Emma in the 1940s